

WASHINGTON ALLOY CO.



ACCESSORIES





Contents

- Page 1 Auto Darkening Welding Helmets, H744, H855 and H855D
- Page 2 Auto Darkening Welding Helmets, H700, H800 and H800D
- page 3 Welding Lenses, Counter Displays, Strikers, Soapstone, Soapstone Holders, Goggles, Tank Wrenches
- Page 4 Welding Hose, Gauges, Slag Hammers, Soldering Flux, Brazing Flux, Kits
- Page 5 Gouging Torches, Torch parts, Carbons, Economy Helmets
- Page 6 Electrode Holders & Ground Clamps
- Page 7 Ground Clamps, Cable Lugs and Connectors, Magnets Torch Stands, Cylinder Caps, MIG Pliers
- Page 8 Anti-Spatter, Tip Dip, Cooling Fluid, Solder, Tungsten, Torch Repair Alloys, Ovens, MIG Carts, Cylinder Carts

SHIPPING

All accessories are combinable with alloy shipments for prepaid freight amounts.

WASHINGTON ALLOY CO.

www.weldingwire.com



3 Year Factory Warranty



Pt. No. WA H855D

H855D Digital Auto-Darkening Welding Helmet

FEATURES:

- * Push button digital controls
- * Manual on, auto off
- * View area 97 x 62mm
- * 4 arc sensors
- * Solar power / 2 changeable CR-2450 batteries
- * 1/25,000 sec. switch time
- * >2 Amp AC/DC switch
- * Dark to light 0.1 - 1 sec.
- * Internal controls
- * Stand-by shade 3.5
- * 3 Shade ranges
 1. Grind shade 4**
 2. Cutting shade 5 to 8
 3. Welding shade 9 to 13
- ** Grinder mode will not protect against welding arc.
- * Outer lens 4.5" x 5.25"
- * Built-in Magnifying lens holder
- * Helmet weight 17.3 oz (490g)



H855 Auto-Darkeining Welding Helmet

Features:

- * Manual on/off, auto off
- * View area 97 x 62mm
- * 4 arc sensors
- * Solar power / 2 changeable CR-2450 batteries
- * 1/25,000 sec. switch time
- * >2 Amp AC/DC switch
- * Dark to light 0.1 - 1 sec.
- * Internal controls
- * Stand-by shade 3.5
- * Grinder switch
- * Outer lens 4.5" x 5.25"
- * Magnifying lens holder
- * Helmet weight 17.3 oz (490g)



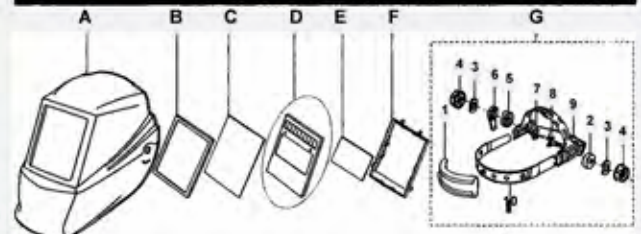
H744 Auto-Darkeining Welding Helmet

Features:

- * Automatic on/off
- * View area 97 x 47mm
- * 2 arc sensors
- * Solar power
- * 1/16,000 sec. switch time
- * >2 Amp AC/DC switch
- * Dark to light 0.1 - 1 sec.
- * Internal controls
- * Stand-by shade 3.5
- * Grinder setting
- * Outer lens 4.5" x 5.25"
- * Magnifying lens holder
- * Helmet weight 17 oz (480g)



PARTS LIST & ASSEMBLY



Part List

ITEM	DESCRIPTION	QTY	PART NUMBER
A	Helmet shell	1	-
B	Rubber gasket	1	-
C	Outside cover lens	5	WA H744H855-OL/5
D	ADF (Auto darkening filter)	1	WA H744-ADF, H855-ADF, and H855D-ADF
E	Inside cover lens	1	WA H744-IL/5 and WA H855-IL/5
F	ADF Holder	1	-
G	Headgear assembly	1	WA H744H855-HG

Parts list G

Item	Description	QTY	Part Number
1	Sweat band	1	-
2	Washer	1	WA H744H855-NK
3	Washer	2	(Nut kit includes the noted items)
4	Block nut	2	-
5	Limitation washer	1	-
6	Angle positioner	1	-
7	Left bolt	1	-
8	Right bolt	1	-
9	Adjustable headband	1	-
10	Front headgear	1	-

All models are approved by the following
 DINplus, CE, ANZI Z87.1, CSA Z94.3
 & AS/NZS 1338.1





Pt.No. WA H700

H700 Auto Darkening Welding Helmet-Gloss black

- * View 3-7/8" x 1-3/4"(100mm x 49mm)
- * UV powered/battery back-up
- * Weld/grind switch,
- * Shade 4 idle, 9-13 adjustable.
- * Switch time .01ms (1/10,000 sec)
- * 4 arc sensors
- * Internal controls
- * Adjustable sensitivity and delay
- * Gross wt. approx. 20 oz (520g)



UV/IR protection is DIN 15
Grinder mode, for face protection when grinding, will not protect eyes while welding.



Matte Black
Pt. no.
WA H700MB



Grinder switch
4 sensors
Battery back-up



Gloss Gun Metal
Pt. no.
WA H700/S



Function Test Button
2 Sensors
Battery back-up



Light Silver
Pt. no.
WA H700/LS
View area
3-3/4" x 1-5/8"
(96 x 42mm)

2 sensors
battery back-up
Inner lens # WA H700-ILb



Pt No. WA H800

H800 Large View Auto Welding Helmet-Gloss black

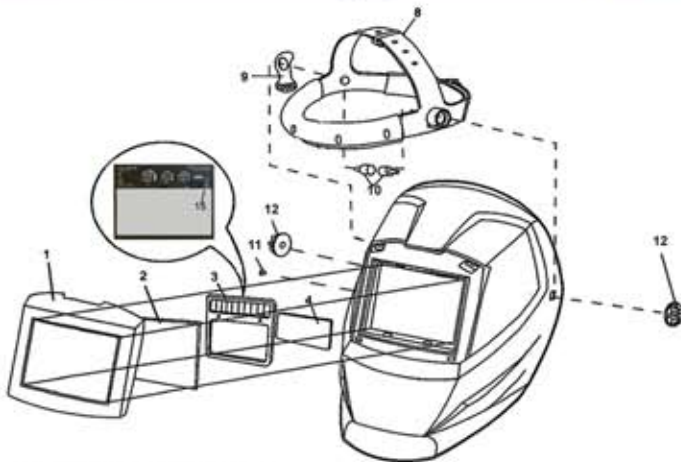
- * View 3.94" x 2.36"(100mm x 60 mm)
- * UV powered/battery back-up
- * Changeable lithium batteries
- * Weld/grind switch
- * Shade 4 idle, 9-13 adjustable.
- * Switch time .08ms (1/12,000 sec)
- * 4 arc sensors
- * Internal manual controls



Pt No. WA H800D

H800-Digital Large View Welding Helmet

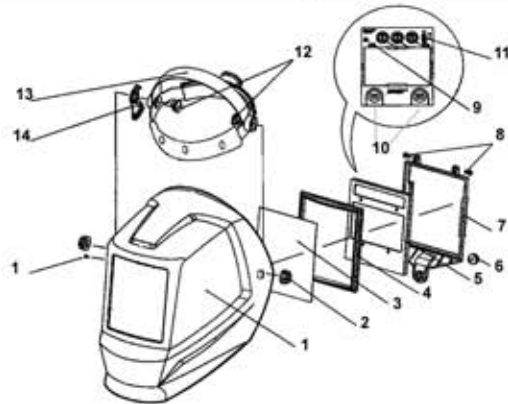
- * View 3.94" x 2.36"
(100mm x 60 mm)
- * UV powered/battery back-up
- * Changeable lithium batteries
- * Weld/grind switch
- * Shade 4 idle, 9-13 adjustable.
- * Switch time .08ms (1/12,000 sec)
- * 4 arc sensors
- * Internal digital controls
- * Adjustable sensitivity and delay



H700 parts list

- 1.) Face cowl (not sold separately)
 - 2.) Outer cover lens WA H700-OL
 - 3.) ADF Filter WA H700-ADF-P
 - 4.) Inner cover lens WA H700-IL
also WA H700-ILB (light silver model)
 - 8.) Headgear WA H700-HG
 - 9.) Positioning tab*
 - 10.) Mount bolts (2)*
 - 11.) Position pin*
 - 12.) Mount nut (2)* WA H700-MK
- No. 9 - 12 included in Mount kit.
Shell is not offered separately.

15.) weld/grind switch (The TEST button will be replaced with the grinding switch)



H800 parts list

- 1.) Helmet shell (not sold separately)
- 2.) Mount kit, **WA H700-MK** [incl. 2 nuts (2), 2 bolts (12)
1 Position tab (14) and 1 position pin (15)]
- 3.) Outer cover lens 4.5" x 5.25" **WA CL215**
- 4.) Lens cradle * **WA H800-RK** (Retainer kit Incl. 6, 7 & 8)
- 5.) ADF Filter **WA H800-ADF** or **ADFD**
- 6.) Retainer screw *
- 7.) Filter retainer bracket *
- 8.) Retainer pivot pins *
- 9.) Low battery indicator N/A
- 10.) Battery compartments N/A
- 11.) Grinder switch N/A/
- 13.) Head gear **WA H700-HG**



WASHINGTON ALLOY CO. ACCESSORIES

HELMET COVER LENSES



Outer Lens
5 pack
Fits Helmets
H855
H855D
H744
H800 and
H800D

Pt No.
WA H744/855-OU5



Inner Lens
5 pack

Fits Helmets
H855 and
H855D

Pt. No.
WA H855-IL/5



Inner Lens
5 pack

Fits Helmet
H744

Pt.No.
WA H744-IL/5

H700 Helmet Cover Lenses

(Polycarbonate)
WA H700-IL Inner Lens
WA H700-OL Outer Lens



Filter Plates and Cover Lenses

(Cello hanger pack)

4-1/2" x 5-1/4" Filter

(Glass)

Pt. Nos. (numbers indicate shade)

WA FP45-8 WA FP45-12
WA FP45-9 WA FP45-13
WA FP45-10 WA FP45-14
WA FP45-11

2" x 4-1/4" Filter

WA FP24-4 WA FP24-11
WA FP24-5 WA FP24-12
WA FP24-8 WA FP24-13
WA FP24-9 WA FP24-14
WA FP24-10

Cover Lenses

(Polycarbonate)

WA C214 2" x 4-1/4"

WA C215 4-1/2" x 5-1/4"



Spark Stick Electronic striker

20 pc Retail Pack
Pt# WA SPARK STICK RP
Individual units
Pt# WA SPARK STICK



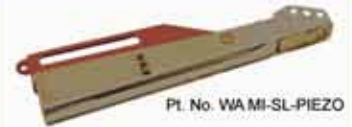
RETAIL COUNTER DISPLAYS



Each kit includes tip file and 13 wire cleaners ranging from #6 (77-76) to 26 (51-49)

TIP CLEANERS

60 pc Retail Pack
Pt#
WA TIP CLEAN ASST RP
Individual units Pt#'s
WA TIP KING Large
WA TIP L Medium
WA TIP STD Small



Pt. No. WA MI-SL-PIEZO

Electronic Spark Lighter

*Ignites all fuel gases with an electronic spark with pinpoint accuracy.
* No batteries or flints...good for over 29,000 strikes



Single Flint Striker

For all fuel gases has a replaceable flint holder and a lanyard loop in the handle



Pt. Nos. WA SPARKLIGHTER-S & WA 508R

FLINT STRIKERS

Single and Triple



Triple Flint Striker

The triangular shaped holder has three flints for reduced downtime due to worn out flints

Tri-flint replacement #WA FL308R

Pt. No. WA FL308

H700 Helmet Cover Lenses

(Polycarbonate)
WA H700-IL Inner Lens
WA H700-OL Outer Lens



Filter Plates and Cover Lenses

(Cello hanger pack)

4-1/2" x 5-1/4" Filter

(Glass)

Pt. Nos. (numbers indicate shade)

WA FP45-8 WA FP45-12
WA FP45-9 WA FP45-13
WA FP45-10 WA FP45-14
WA FP45-11

2" x 4-1/4" Filter

WA FP24-4 WA FP24-11
WA FP24-5 WA FP24-12
WA FP24-8 WA FP24-13
WA FP24-9 WA FP24-14
WA FP24-10

Cover Lenses

(Polycarbonate)

WA C214 2" x 4-1/4"

WA C215 4-1/2" x 5-1/4"



MAGNIFYING LENSES

2" X 4-1/4"

Pt# (Number indicates diopter)

WA ML-75 WA ML-150 WA ML-225
WA ML-100 WA ML-175 WA ML-250
WA ML-125 WA ML-200 WA ML-300

PROTECTIVE GOGGLES

(Similar to ANSI Z87+)



#WG SG231
Chip goggles
For light weight flying particles

Vent goggles
For light spray and splash protection
#WG SG234



BURNING GOGGLES

Shade 4 Flip-up lens

For use with or without glasses in all Oxy/fuel welding, brazing or silver soldering applications.

TANK WRENCHES



10-WAY WRENCH
Pt. Nos.
3/8" WA TW-20
1/4" WA TW-250



SOAPSTONE

Marking Crayons (Talc sticks)

Cut from premium grade soapstone, shows up clearly under arc light to show the location of the joint being welded in low-light areas.

Flat - Pt.No.TU SOAPSTONE 01
Approx. 1/2" x 3/16" x 5"

Round - Pt.No. TU SOAPSTONE 03
Approx. 1/4" x 1/4" x 5"

Square - Pt.No. TU SOAPSTONE 04
Approx 1/4" x 11/4" x 5"

SOAPSTONE HOLDERS

Hold 5" flat or round soapstone (Dimensions are approximate)

Pt. No. WA FLAT HOLDER

Flat Holder

for flat crayons
1/2" x 3/16"
Prevents breakage

Round
Holds 1/4" round crayon
Sturdy body prevents breakage
Pt. No. ROUND HOLDER



WASHINGTON ALLOY CO. ACCESSORIES



TWIN WELDING HOSE

GRADE R

For Acetylene fuel gas

1/4" x 25' - WA TH 05R 25

1/4" x 50' - WA TH 05R 50

1/4" x 100' - WA TH 05R 100

GRADE T

For All fuel gases

1/4" x 25' - WA TH 05T 25

1/4" x 50' - WA TH 05T 50

1/4" x 100' - WA TH 05T 100

PRESSURE GAUGES



2.5" Bottom mount
Pt Nos. PSI
WA PG2530 - 30
WA PG25100 - 100
WA PG25200 - 200
WA PG25400 - 400
WA PG254000 - 4000



2" Bottom mount
Pt Nos. PSI
WA PG230 - 30
WA PG2100 - 100
WA PG2200 - 200
WA PG2400 - 400
WA PG254000 - 4000



1.5" Bottom mount
Pt Nos. PSI
WA PG2530 - 30
WA PG25100 - 100
WA PG25200 - 200
WA PG25400 - 400
WA PG254000 - 4000

All pipe threads are to NPT standards

FLOW GAUGES



50 CFH
Pt Nos. DIA.
WA FG1550 1.5"
WA FG250 2"
WA FG2550 2.5"



30 CFH
Pt Nos. DIA.
WA FG1530 1.5"
WA FG230 2"
WA FG2530 2.5"



Individual hanger cards

GAUGE REPLACEMENT LENSES

Made of Lexan
Pt. Nos.
WA PG15 LENS, WA PG2 LENS, WA PG250 LENS
1.5" 2" 2.5"



Fluxes for Brazing

High Temperature Brazing

Stainless Steel Back-up Flux

For stainless pipe joints without purging
Pt. No. TAF SSBF 116 1 lb jar

Black Silver Flux (1,000 - 1,800°F)

For silver brazing in all applications
Pt. No. TAF SB 216 1 lb jar
TAF SB 208 8 oz jar
TAF SB 206 Brush cap 6 oz jar
TAF SB 204 4 oz jar

AWS A5.31-91 Type FB3C, AMS 3411

White Silver Flux (1,000 - 1,700°F)

For silver brazing in most applications
Pt. No. TAF SB 116 1 lb jar
TAF SB 108 8 oz jar
TAF SB 106 Brush cap 6 oz jar
TAF SB 104 4 oz jar

AWS A5.31-91 Type FB3A, AMS 3410

Cast Iron Flux (1,540 - 2,900°F)

For brazing with RCI cast iron rods
Pt. No. TAF CI 116 1 lb jar

General Purpose Flux (1,400 - 2,200°F)

For Bronze rods on most non-silver alloys
Pt. No. TAF GP 116 1 lb jar
AWS A5.31-91 Type FB3J, MIL-F-16136B - A and B

Aluminum Brazing Flux (1,030 - 1,280°F)

Pt. No. TAF AB 112 12 oz jar
TAF AB 106 6 oz jar
TAF AB 640 40 lb pail
AWS A5.31-91, Type FB1A, AMS 3412 powder

780 Aluminum Brazing Paste Flux

(1,030 - 1,280°F) with brush cap
Pt. No. TAF 780 03 16 oz jar

Magnesium Brazing Flux

(950 - 1,300°F) Toxic fluorides and chlorides
Pt. No. TAF MB 108 8 oz jar
AWS A5.31, Type FB2-A

Fluxes for Soldering

Low temperature soldering

Aluminum Soldering Flux (350-550°F)

Chloride-free, join aluminum to most metals
Pt. No. TAF AS 112 12 oz jar
TAF AS 108 8 oz jar

Solder Flux Acid-based (220-650°F)

General Purpose for most soldered joints
Pt. No. TAF SF 216 16 oz jar
TAF SF 204 4 oz jar
AWS A5.31-91 A-A-51145C FORM B (non electrical)

Solder Flux, Non-Acid (390-500°F)

General Purpose for electrical joints
Pt. No. TAF SF 116 16 oz jar
TAF SF 104 4 oz jar
TAF SF 1128 1 Gal jug

Solder Paste Flux, Petroleum-Acid based

For plumbing / General Purpose (200-600°F)
Pt. No. TAF SPF 102 2 oz tin
TAF SPF 104 4 oz jar
TAF SPF 164 4 lb tub

Solder Flux, Zinc Chloride (315-600°F)

General Purpose / aggressive action
Pt. No. TAF SF 316 16 oz jar
TAF SF 304 4 oz jar

Solder Flux, Rosin-gold (390-500°F)

General Purpose for electrical joints
Pt. No. TAF RSF 116 16 oz jar
TAF RSF 104 4 oz jar



Superflow Brand fluxes

are made to meet the highest quality industry specifications.

RoHS compliant

WOOD HANDLE BRUSHES

Stainless Steel wire brush



Pt. No. WA WIRE BRUSH SS
For use on Aluminum, Magnesium and Stainless Steel or any general purpose.

Carbon Steel wire brush



Pt. No. WA WIRE BRUSH ST
For use on mild or carbon steel, cast iron or any general purpose application.

Brass wire brush



Pt. No. WA WIRE BRUSH BR
For use in any application

Brazing and Soldering Kits

780 Aluminum Braze Kit
Includes 1 oz of 3/32" alloy with 2 oz of paste flux and a convenient brush cap.
Approx. 35,000 psi Tensile strength. (760-800°F)
Pt. No. TAS 780 KIT - also -
TAS 50/50 KIT - 3/32
TAS 96/4Ag KIT - 3/32
Other diameters are available.

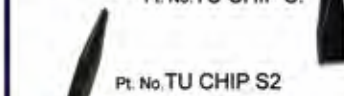


SLAG HAMMERS

Spring Chisel & Pick

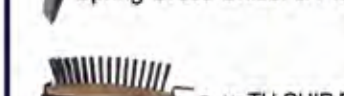


Pt. No. TU CHIP S.



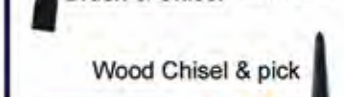
Pt. No. TU CHIP S2

Spring Cross Chisel & Pick



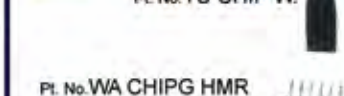
Pt. No. TU CHIP B.

Brush & Chisel



Wood Chisel & pick

Pt. No. TU CHIP W.



Pt. No. WA CHIPG HMR

Slag Chipper

for flux & metal core weld beads



1,000 Amp Arc Gouging Torch
 For up to 1/2" round, half-round, flat and hollow carbons.
 Works with compressed air, 80 psi @ 28 cfm
 360 Swivel head and 7' power cable.
 Parts compatible with major brand.
 Pt. No. TG K1000A

GOUGING CARBONS

Round 12"
(Pointed)



For all gouging and scarfing

- Pt. Nos. 1/8" - TG G/C 02
 5/32" - TG G/C 03
 3/16" - TG G/C 04
 1/4" - TG G/C 05
 5/16" - TG G/C 06
 3/8" - TG G/C 07
 1/2" - TG G/C 08

1/2 Round 12"



Heavy scarfing, Bead crown removal

- Pt. No. 5/8" - TG G/C 11H

GOUGING CARBONS

Jointed 17"



For continuous feed operations

- Pt. Nos. 3/8" - TG G/C/J 07
 1/2" - TG G/C/J 08
 3/4" - TG G/C/J 10

Flat 12"

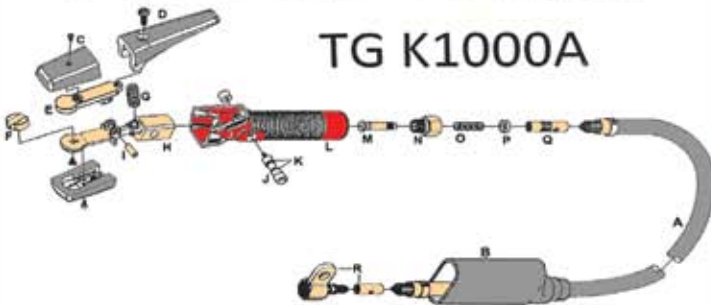


Shallow scarfing and gouging

- Pt. Nos. 3/16" x 5/8" TG G/CF 04
 3/8" x 5/32" TG G/CF 071
 3/8" x 3/16" TG G/CF 072

GOUGING TORCH

TG K1000A



K1000A Parts List

Part Label	Description	Notes
A	7' Cable assembly	-
B	Cable boot	-
C	Insulator jaw caps w/screws (2)	TG K1000A UPPER INS / BOTTOM INS
D	Upper jaw lever w/screw	TG K1000A LEVER/SCREW
E	Upper jaw	TG K1000A JAW
F	Swivel head	TG K1000A HEAD/SCREW
G	Spring	TG K1000A SPRING
H	Valve body w/lower jaw	TG K1000A BODY
I	Jaw pin	TG K1000A HINGE PIN
J	Spool Assembly	TG K1000A SPOOL-RING
K	O-rings (2)	TG K1000A O-RING
L	Grip handle	-
M	Swivel joint stem	-
N	Swivel joint nut (male)	-
O	Swivel joint spring	-
P	Swivel joint bushing	-
Q	Swivel joint tube (sold in the complete assembly)	-
R	Cable connector (female)	-



Round Hollow core - 12"

Cleaner, more consistent passes

- Pt. Nos. 3/16" - TG G/C/H 04
 1/4" - TG G/C/H 05
 5/16" - TG G/C/H 06
 3/8" - TG G/C/H 07

Packaging:

All carbons are sold in 100 pc units
 12" carbons are packed in two 50 pc packs per unit (1/8 and 5/32 are 100 pc packs)
 17" Jointed carbons are in 25 pc packs



AMERICAN MADE CARBON-ARC TORCH
 1,000 AMPS

7 Foot Power Cable
 Works with compressed air
 80 psi @ 28 cfm
 360° Swivel head and cable

ECONOMY HELMETS

for welding or arc gouging
 Thermal-plastic construction with flip-up lens holder, adjustable head gear.

Pt. No. WA H750
 2 x 4-1/4"



4-1/2 x 5-1/4"
 Pt. No. WA H754



EHT Series Electrode Holder

From 250A - 500A

Part No.	Cable size
WA EH250T	1/0
WA EH300T	2/0
WA EH350T	3/0
WA EH500T	4/0

Features a high profile upper lever for easier jaw operation. Great for one-handed use or in awkward positions.



EHL Series Electrode Holder

From 200A - 500A

Part No.	Cable size
WA EH200L	#6 to 1/0
WA EH250L	1/0
WA EH300L	2/0
WA EH350L	3/0
WA EH500L	4/0

Features a heavy-duty spring for greater jaw tension that won't let go or allow rod to shift in the jaws while welding.



EHB Series Electrode Holder 400A and 600A

Part No.	Cable size
WA EH400B	3/0 - 4/0
WA EH600B	4/0

The "twist-lock" action allows the welder to drop a stub and insert a new electrode with just a twist of the wrist. Though rated for higher amps, the size and weight are comfortable in all amperages.



EHJ Series Electrode Holder 200A and 300A

Part No.	Cable size
WA EH200J	#6 - 1/0
WA EH300J	2/0

A well built, reliable holder with solid jaw caps and handle to withstand everyday usage. The 200Amp model has a closed-sided spring shroud and handle to prevent debris from lodging under handle.



EHSK Series Economy Electrode Holder

200 Amp

Part No.	Cable size
WA EH200T	#6 - 1/0

Great for all light-duty welding, either in the field or for inside. This tough little holder is a great choice for a back-up or the small buzz box.



GCT Series Solid Brass Ground Clamp

200A - 500A

Part No.	Amperage
WA GC200T	200A
WA GC300T	300A
WA GC500T	500A

This design has a strong spring with a small pinch point, making solid ground contact in small areas or when bridging a flange or other obstructions.



GCL Series Solid Brass Ground Clamp

200A - 500A

Part No.	Amperage
WA GC200L	200A
WA GC300L	300A
WA GC500L	500A

This design has a larger contact area, for a solid ground on plate or other flat areas. Upper jaw is designed to bridge flanges or other obstructions.



GCJ Series Ground Clamp Solid Brass Lower

200A - 500A

Part No.	Amperage
WA GC200J	200A
WA GC300J	300A
WA GC500J	500A

This clamp has a solid brass lower jaw with a durable steel upper jaw, giving a solid ground connection with reduced weight.



GL Series Steel w/ brass jaw Ground Clamp

300A - 500A

Part No.	Amperage
WA GL300L	300A
WA GL500L	500A

This clamp is designed for economy with full functionality. With a sturdy steel frame for light weight and solid brass contact points, this is a great clamp for general purpose welding.



C-Clamp Solid brass Ground Clamp w/ cable connect

300A - 500A

Part#	Amperage
WA GCWG60C	600A

This clamp is designed to stay put even under the weight of up to 4/0 cable. A twist/lock cable connector makes change outs and hook ups easy.



Magnetic Ground Clamp

300A - 500A

Part No.	Amperage
WA EMC 30R	250A
WA EMC 50R	400A

This ground clamp is designed for quick movement around the work piece to give the best ground location for various joints.



Cable Connectors Twist-Lock Brass construction 100A - 500A

Part No.	Amperage
WA CC100	100A
WA CC300	300A
WA CC400	400A

(Add -M or -F to part no. to order male or female halves separately, such as WA CC300-M for male)

In-Line twist-lock cable connectors for quick disconnect and hook up.



Model TE-OF Model TE-AF

Twist-Lock Panel Lugs Brass construction

Cable size up to 4/0

Part No.	Amperage
WA CL-TE-10F	200A
WA CL-TE-1AF	200A
WA CL-TE-20F	400A
WA CL-TE-2AF	400A

Twist-lock Panel Lugs for quick-connect (Flat or Angled)



Model MCM-F Model MCM-M
M-Style panel Plug & Socket
200A - 500A

Part No.	Amperage
WA MCM8-F Socket	200A
WA MCM8-M Plug	200A
WA MCM10-F Socket	300A
WA MCM10-M Plug	300A
WA MCM12-F Socket	500A
WA MCM12-M Plug	500A



Hammer-on Cable Lug
Crimps with the blow of a hammer. Great for quick field repairs.

Part No.	Cable Size
CLH-L	3/0 - 4/0
CLH-M	1/0 - 2/0
CLH-S	#6 - 2



Crimp on Cable Lugs
Requires a crimping tool or can be soldered for a permanent joint.

Part No.	Cable Size
CLS-L	3/0 - 4/0
CLS-M	1/0 - 2/0
CLS-S	#6 - 2

Magnetic Torch Stands

Each of these torch stands are designed to insulate your torch from your workpiece. (M.I.G. torches should have the nozzle installed for proper insulation from workpiece.)



M.I.G.
Pt. No. WA MI-MTS-M



T.I.G.
Pt. No. WA MI-TTS-M



S.M.A.W.
Pt. No. WA MI-EHS-M



M.I.G. Pliers

Multi-use tool for welders
Pt. No. WA MIG PLIERS



Angle Magnets

Measures 45° or 90° instantly
Avoid "arc-blow" by removing after tacking your weld.

WA MAG-L Large
WA MAG-M Medium



Cylinder Caps

Great for replacing lost caps

Part No.	Tank
WA CCACT	Acet. coarse thread
WA CCAFT	Acet. fine thread
WA CCOCT	Oxy. coarse thread
WA CCOFT	Oxy. fine thread



WASHINGTON ALLOY CO. ACCESSORIES

Welding Chemical Aids

Solvent Based Anti-Spatter

Provides a protective barrier to prevent spatter build-up on the workpiece. Use with ventilation, contains Methylene Chloride. Sold in case of 12 16 oz cans. Pt. No. WC ANT SPAT 01

Premium Tip Dip

A blue gel that protects nozzles and tips from spatter build-up. Packed 12 / 1 lb tubs. Pt. No. WC NOZ DIP 01

"GREEN" Water-Based Anti-spatter, 1 gallon.

For use with spray bottle dispenser. No toxic chemicals. Pt. Nos. WC GREEN SPAT 02 (1 gal) WC GREEN SPAT 03 (5 gal)

Cooling Fluid

Water / ethylene glycol based. for MIG, TIG and Plasma equipment protection. +19° F / -7° C. Pt. Nos. WC COOL F. 128 (1 gal) WC COOL F. 640 (5 gal)

Torch Alloys for Maintenance & Repair

Hot Galvanizing Bar

Applied with a torch to replace galvanizing after welding or grinding. 1/4" x 14" Temp. 450-600° F. Pt. Nos. TU GALVBAR 09 (5 lb) TM GALVBAR 09 (1 lb)

Alu-Zinc Aluminum repair solder

Will bond pot metal and most zinc, aluminum and other white metal castings or very thin material. 715 - 735° F T/S 39,000 psi. Pt. Nos. TU ALU-ZINC 02 1/8" x 18" TU ALU-ZINC 03 5/32" x 18" TU ALU-ZINC 04 3/16" x 18" TU ALU-ZINC 05 1/4" x 18" Self fluxing

RCI & RCI Modified

For Braze repair on Cast Iron. Use with Cast Iron flux. Pt. Nos. TU RCI 07 3/16 x 18" TU RCI 09 1/4 x 18" TU RCI 08 3/8 x 18"

Lead-Free Solders

Tin - Antimony

95/5 Solid 3/32 x 1 lb (TAS 95/5Sb 261) 1/8 x 1 lb (TAS 95/5Sb 281) 95/5 1 lb bar (TAS 95/5Sb BARS)

Tin/Silver (Sn/Ag)

94/6Ag Solid 1/16 x 1 lb (TAS 94/6Ag 241) 3/32 x 5 lb (TAS 94/6Ag 265) 1/8 x 1 lb (TAS 94/6Ag 281)

96/4Ag Solid 1/16 x 1 lb (TAS 96/4Ag 241) 96.5/3.5 Solid 1/16 (TAS 96.5/3.5Ag 241) 3/32 (TAS 96.5/3.5Ag 261) 1/8 (TAS 96.5/3.5Ag 281)

1 ounce retail packs

40/60 solid 1/16 (TAS 40/60 241S/1) 50/50 solid 1/16 (TAS 50/50 241S/1) 50/50 rosin 1/16 (TAS 50/50 241R/1)

60/40 solid 1/16 (TAS 60/40 241S/1) 60/40 rosin 1/16 (TAS 60/40 241R/1)

94/6Ag solid 1/16 (TAS 94/6Ag 241/1) 96.5/3.5Ag solid 1/16 (TAS 96.5/3.5Ag 241/1)

Tin/Lead solders (Sn/Pb)

1 lb spools

40/60 Solid 1/16 (TAS 40/60 241S) 3/32 (TAS 40/60 261S) 1x8 (TAS 40/60 281S) 40/60 Rosin 1/16 (TAS 40/60 241R) 3/32 (TAS 40/60 261R) 1x8 (TAS 40/60 281R) 40/60 Acid 1/16 (TAS 40/60 241A) 3/32 (TAS 40/60 261A) 1/8 (TAS 40/60 281A) 50/50 Solid 1/16 (TAS 50/50 241S) 3/32 (TAS 50/50 261S) 1/8 (TAS 50/50 281S) 50/50 Rosin 1/16 (TAS 50/50 241R) 3/32 (TAS 50/50 261R) 1/8 (TAS 50/50 281R) 50/50 Acid 1/16 (TAS 50/50 241A) 3/32 (TAS 50/50 261A) 1/8 (TAS 50/50 281A) 60/40 Solid 1/16 (TAS 60/40 241S) 3/32 (TAS 60/40 261S) 1/8 (TAS 60/40 281S) 60/40 Rosin 1/16 (TAS 60/40 241R) 3/32 (TAS 60/40 261R) 1/8 (TAS 60/40 281R) 60/40 Acid 1/16 (TAS 60/40 241A) 3/32 (TAS 60/40 261A) 1/8 (TAS 60/40 281A) 50/50 Solid 1 lb Bar 13.3" x .3" x .75" (TAS 50/50 BARS)

50/50 Solder-in-flux

Flux with solder particle mixture brush into joints and heat the parts. Pt. No. TAS 50/50 01P 1 lb jar

Rod Ovens

50 lb Capacity

I.D. 6" x 6" x 18.2" O.D. 9.25" x 9.25" x 23.5" Temp. 175 - 300° F

* Powder coated * 4 section compartment * Adjustable exterior thermostat * With wheels and T-handle * 120V (can be wired for 220V)

Pt. No. WA EQ 50SiW

50 lb Capacity

same as above without wheels and handle. Pt. No. WA EQ 50Si

20 lb Capacity

I.D. 4.5" x 4.5" x 18.75" O.D. 7" x 7" x 23" Temp. 175-300 F

* Powder coated * Lift-up rod holder * Adjustable thermostat * 120V (can be wired for 220V)

Pt. No. WA EQ 20Si

Tungsten Electrodes

AWS A5.12

Class	Description	Part#	Base
EWP	Pure	TTU	P/T
EWCe-2	Ceriated	TTU	C/T
EWZr-1	.3 Zirconated	TTU	Z/T
EWZr-8	.8 Zirconated	TTU	Z/TG
EWG	Rare Earth	TTU	3TH
EWLa-2	2% Lanthanated	TU	L/T
EWLa-1.5	1.5% Lanthanated	TTU	GL/T
EWLa-1	1% Lanthanated (special order)		

Size code (suffix) I.E. TTU P/T 04 (1/16" pure)
.040 x 7" - 03 3/32 x 7" - 05 5/32 x 7" - 07
1/16 x 7" - 04 3/32 x 12" - 05-12 5/32 x 12" - 07-12
1/16 x 12" - 04-12 1/8 x 7" - 06 3/16 x 7" - 08
2mm x 7 - 042 1/8 x 12" - 06-12 1/4 x 7" - 09

Rare Earth Tungsten

Washington Alloys' EWG Purple tip has no Thorium (Th) and is non-radioactive. It has a smooth, stable arc and is a suitable substitute in all applications that call for 1% or 2% Th Tungsten electrodes.

Tungsten is sold in 10 pc packs

MIG Carts



MIG and Plasma carts are individually boxed

Cylinder Carts

14" Steel hubbed wheels on a sturdy frame. Designed for large Oxy/fuel tanks measuring 31" or taller.

Cart: 44.5" H X 31.5" W
Tank Base 25" W X 13" D

8" steel hubbed wheels. designed for smaller oxy/fuel tanks measuring 27" or taller.
Cart: 41" H X 26" W
Tank Base 19" W X 10" D
Pt. No. WA CYT-8CH

Carts are individually boxed (Assembly required)

MIG / TIG

Platform allows for a variety of small machines. Top measures 10.8" W x 17.6" D

Over-all dimensions:

11.7" W x 28.2" D x 22.8" H

Pt.t. No. WA MIG-CARTS

MIG / TIG / Plasma

Larger platform allows for a variety of small machines. Top measures 12.2" W x 23.6" D

Over-all dimensions 13" W x 34.25" D x 27" H (Assembly required)

Pt. No. WA MIG-PLASMA CARTS